



Your Fleet Intelligence Partner

GPS VEHICLE TRACKING



800 FLEETO
800-(353386)



Email us:
info@fleeto.ae



Office #3203, 32nd Floor, Citadel Tower,
Marasi Dr, Business Bay, Dubai UAE

About Fleeto

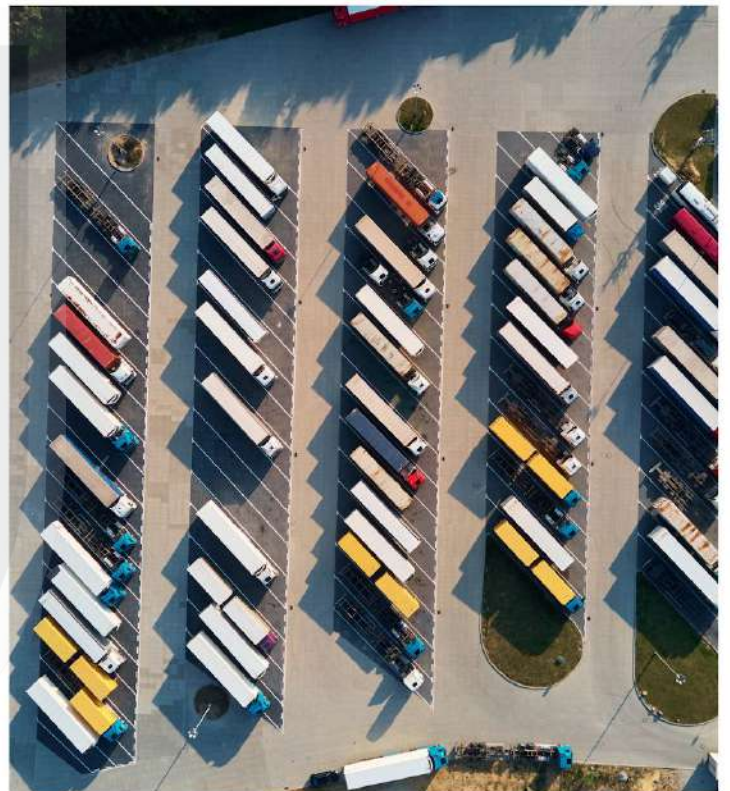
Fleeto isn't your typical fleet management system. It's a smart, forward-thinking solution crafted to boost efficiency, safety, and overall profitability. Through cutting-edge data analytics, Fleeto empowers businesses to make well-informed decisions. It keeps a watchful eye on key metrics like fuel usage, maintenance timetables, and driver conduct, offering a holistic perspective on fleet operations. As a division of Royex Technologies, Fleeto benefits from a decade of industry expertise, and it proudly collaborates with Tom Tom, a premier mapping solution provider, and Teltonika, a top GPS IoT device manufacturer. Fleeto stands tall in the industry, combining innovation with a wealth of experience.



Fleeto is a division of Royex Technologies, a pioneering development company based in Dubai, UAE, specializing in eCommerce, mobile app solutions, and AI development.

Since its inception in 2013, Royex has fostered a reputation for excellence, collaborating with major entities such as NEOM, FIFA, Coca-Cola, Dubai Duty Free, Dubai Aviation, NBAD, and more. This extensive experience with industry giants underscores Royex's depth of expertise and proficiency in the tech landscape.

The backbone of Royex's success is its talented and diverse team, driving the company's growth and prominence in the technology industry. With a global presence, Royex Technologies remains a beacon of technological innovation in Dubai, leveraging its expertise to deliver cutting-edge solutions.



Why Should You Use a Fleet Management Solution

A Fleet Management Solution is the key to unlocking a spectrum of benefits for your business



Optimised Performance

Fleeto is designed to provide real-time insights, allowing for data-driven decisions that enhance operational efficiency and reduce costs.



Improved Safety & Compliance

Fleeto enables fleets to be compliant with operational standards and road regulations through monitoring, tracking and notifications.



Enhanced Operational Visibility

Gain a comprehensive view of your fleet's activities with real-time tracking and reporting.



Improved Vehicle Management

Monitor and analyze Vehicles in the fleet, get vehicle maintenance alerts and other reports.



Choose Fleeto as your trusted partner , and let's drive success together on this journey.

What is Fleeto

Fleeto is a premium and intelligent fleet management solution designed to comprehensively address the needs of companies with vehicle fleets.

Fleeto has partnered with Teltonika to use their premium quality devices that are tried and tested for efficient fleet management.

Adding to Fleeto's strengths is its partnership with TomTom, a leading map, navigation and traffic data provider which is also used by Uber.

Fleeto has been designed specifically for these Teltonika tracking devices that are fully approved by regulatory authorities for use as well as TomTom's mapping solutions.

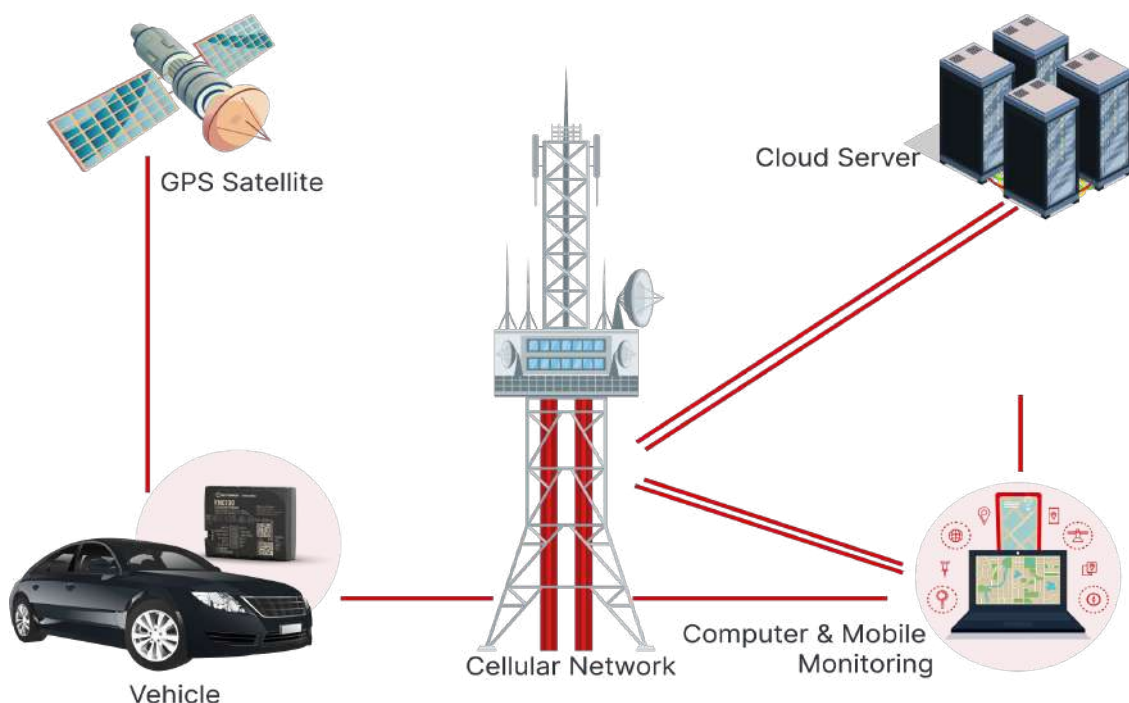
How Fleeto Works

Fleeto combines GPS and AI for intelligent Fleet Management.

GPS device keeps track of location, vehicle status, and driving behavior.

This data is sent to cloud server and analyzed by Fleeto.

User gets performance, safety, and maintenance insights via the Web Portal and Mobile Application.

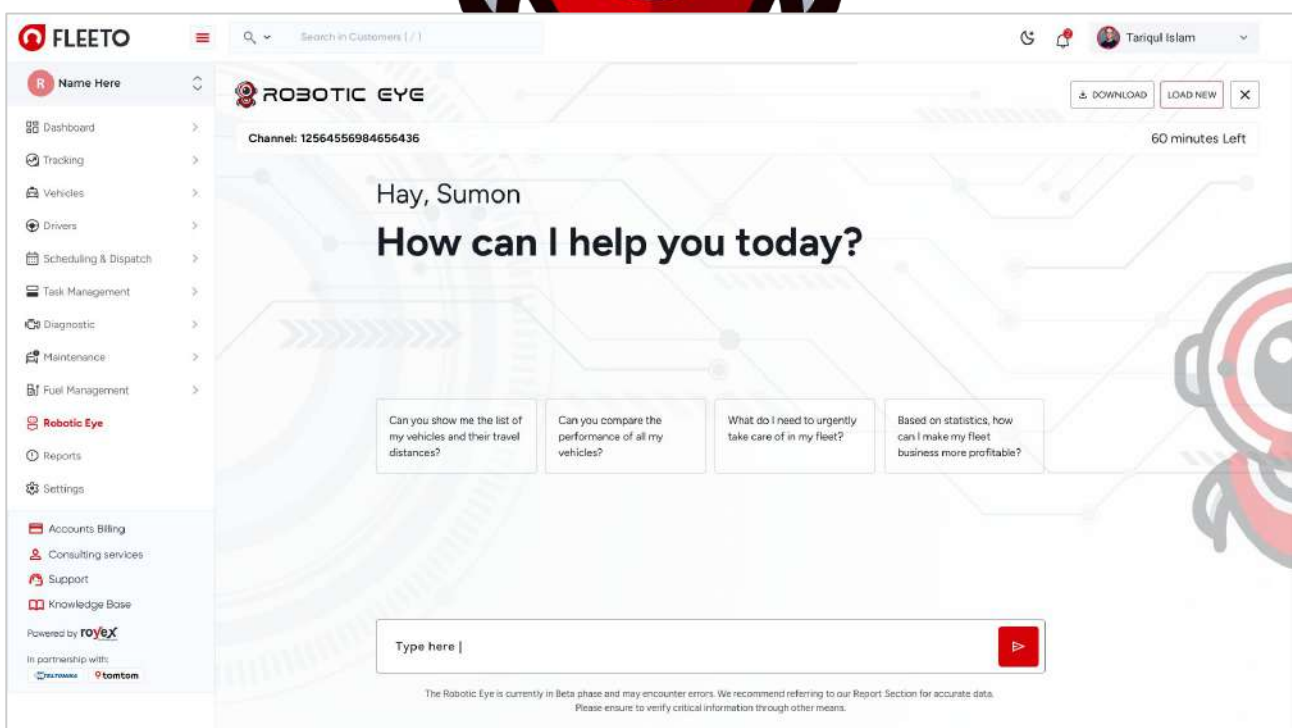


Robotic Eye

Robotic Eye is the latest AI innovation from Fleeto, designed to monitor your entire fleet 24/7 with intelligent precision. Powered by advanced AI, Robotic Eye understands your business needs and recommends actions that drive better performance and profitability.

Forget sifting through endless reports — simply ask Robotic Eye questions like, 'How can I make my business more profitable?' or 'Who is my best driver?' and it will analyze your fleet data instantly to provide clear, actionable insights.

This is just the beginning. We're continuously adding powerful new features to Robotic Eye to make your operations smarter, your decisions faster, and your life easier.



Fleeto's Advanced Fleet Management Modules

With Fleeto's comprehensive suite of modules, businesses gain unparalleled flexibility and scalability, allowing them to tailor their fleet management system to their specific needs. This consolidation of features streamlines operations, reducing the complexity of managing multiple systems while improving overall efficiency.



Door Lock Monitor

The Door Lock Monitor module comes equipped with advanced sensors and monitoring capabilities, it ensures the security of your vehicles by detecting and reporting any unauthorized



Temperature & Humidity Monitor

The Temperature and Humidity Monitor module is designed to provide accurate and continuous monitoring of environmental conditions within a specified area.



Fuel Level Monitoring

The Fuel Level Monitoring module is designed to provide accurate and real-time monitoring of fuel levels within vehicles, machinery, or storage tanks.



Tire Pressure Monitoring

The Tire Pressure Monitor module is an essential component of vehicle safety systems, designed to continuously monitor the air pressure in each tire. Equipped with pressure sensors mounted on each tire



Weight Monitor

Knowing the loaded weight of many different kinds of vehicles is essential for safe operation, maximizing payload, and avoiding overloading fines. You will be able to track weight based on truck suspension adjustments with a corresponding



Battery Health Monitor

The Battery Health Monitor module is a critical component for assessing and managing the health and performance of batteries, whether in vehicles, electronic devices, or renewable energy systems.



Movement Detection Monitor

The Movement Detection Monitor module is an advanced system designed to detect and analyze movement within a specified area or environment. Equipped with motion sensors, cameras, or other detection technologies,



Driver Identification

Driver Identification ensures only authorized drivers operate fleet vehicles by using RFID, key fobs, or NFC. It links drivers to trips, prevents misuse, and monitors behavior like speeding or idling.



Seat Sensor

Seat sensors in UAE limousines are advanced pressure-sensitive devices integrated into seats to detect occupancy. These sensors use force-sensing technology to detect seat occupancy, enabling seatbelt alerts, airbag control, and live passenger monitoring.



Engine Diagnostics

The Engine Diagnostics module is designed to monitor and analyze the performance of internal combustion engines. It utilizes advanced sensors and onboard diagnostics to continuously assess various.



Occupancy Monitor

The Occupancy Monitor module is a specialized system designed to monitor and analyze seat occupancy within buses, school buses, or other vehicles transporting passengers. This module utilizes advanced image



Asset Tracking

The Asset Tracking Module is tailored for tracked delivery items is a specialized system designed to monitor and manage the location, status, and movement of parcels, packages, or goods throughout the delivery process.



Cam Monitor

The In-Vehicle Camera Monitoring module is a specialized module designed to enhance safety, security, and operational efficiency within vehicles, such as cars, trucks, buses, or fleet vehicles.



Robotic Eye

The Robotic Eye is an advanced AI module integrated into Fleeto's system, designed to provide intelligent suggestions and insights based on vehicle statistics, user queries, and real-time data analysis.



Command Center

The Command Center is a central hub in Fleeto's admin panel, providing fleet managers and administrators with remote control capabilities over the fleet's tracking devices and vehicles. This module enables seamless



Repair and Maintenance

The Repairs & Maintenance module in Fleeto helps track, schedule, and manage all vehicle servicing needs. It sends alerts for upcoming maintenance, logs repair history, and optimizes service costs. This ensures vehicles stay in top condition, reduces unexpected breakdowns, and extends fleet lifespan efficiently.



Scheduling and Dispatch

The Schedule and Dispatch module in Fleeto streamlines trip planning and driver assignment. It allows fleet managers to schedule jobs, assign vehicles, and track dispatch status in real-time. This ensures timely deliveries, reduces idle time, and boosts overall operational efficiency through better coordination and route optimization.

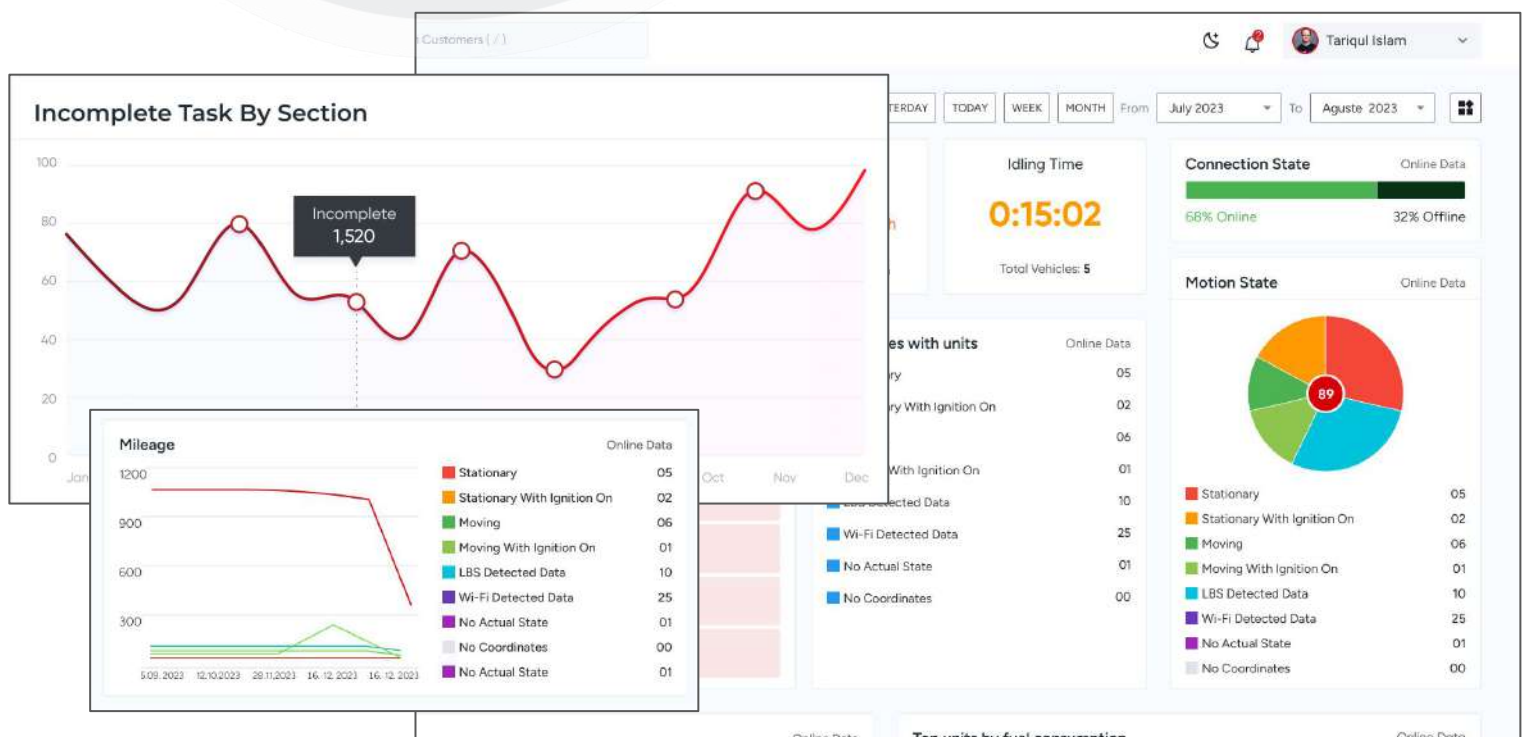


School Bus Management

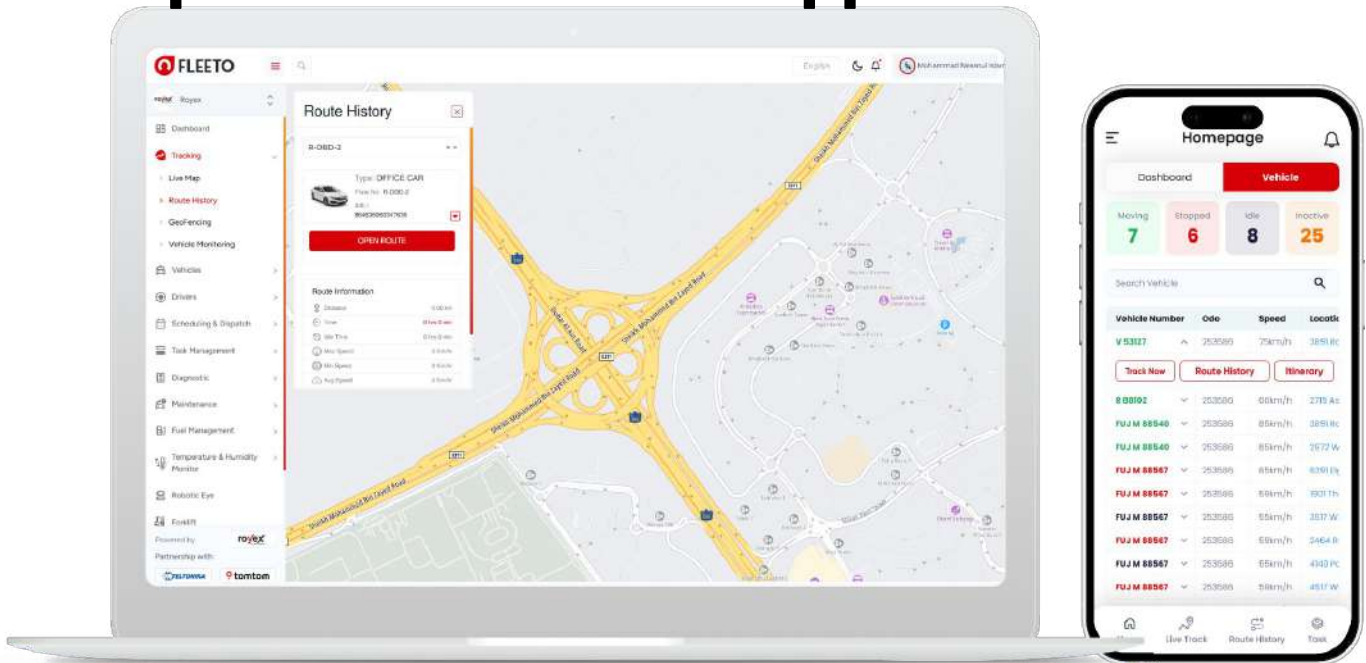
The School Bus Management module in Fleeto ensures safe and smart student transportation with real-time tracking and advanced monitoring. It includes multiple cameras, temperature sensors, door lock sensors, and seat sensors with visual detection to monitor how many children are onboard. This system enhances safety, ensures accountability, and keeps parents and schools informed at all times.

Fleeto is Customizable

One of Fleeto's key strengths is customization. We understand that the same features and reports don't fit every business, so Fleeto is built to be fully adaptable. Based on each client's specific needs, we tailor the solution to deliver the most effective vehicle management system. Please note, customization involves additional cost.



Web platform & Mobile Application



Fleet Management For All Industries



Car Rental



Logistics



Travel & Tourism



LPG Delivery



School Bus



Driving Institute



On-demand Delivery



Medical Transport

We Love Our Clients



SOBHA
REALTY





Connected devices

2,200+



Devices online

1,700



Supported devices

100+



Small business

130



Locations processed

50,000,000+



Daily active users

120+

Certifications



TDRA

هيئة تنظيم الاتصالات والحكومة الرقمية
TELECOMMUNICATIONS AND DIGITAL
GOVERNMENT REGULATORY AUTHORITY





In partnership with



Take the Driver's Seat of Efficiency with Fleeto!

Contact Us and Request a Demo Today



Email us:
info@fleeto.ae



800 FLEETO
800-(353386)



Office #3203, 32nd Floor, Citadel Tower,
Marasi Dr, Business Bay, Dubai UAE

